



# Introduction to Research Impact Assessment

May 2016

**Deanne Langlois-Klassen, PhD, Associate Director**  
Performance Management & Evaluation  
Alberta Innovates – Health Solutions



Transforming health and wellbeing  
through research and innovation



# Goals for Today

Why assess research impact?

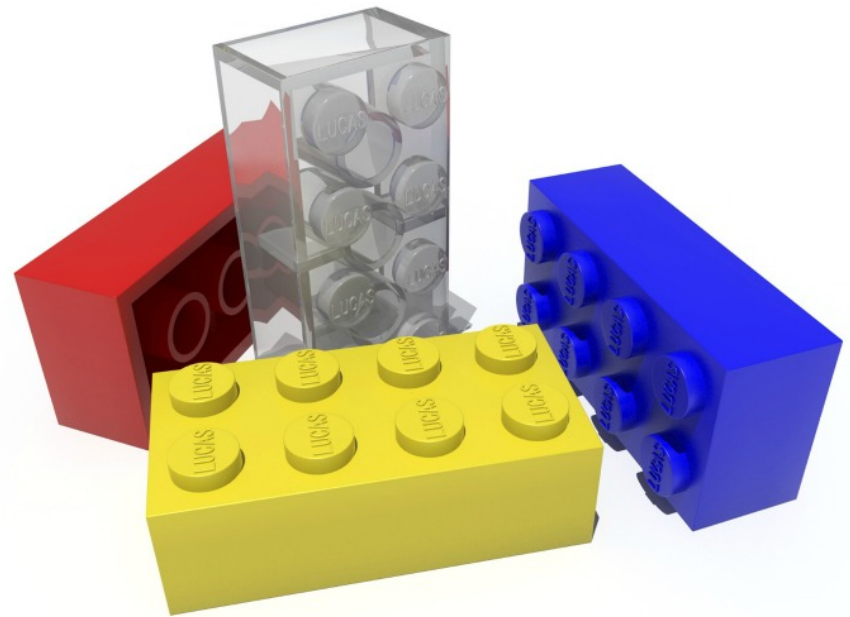
What is “research impact”?

Who needs to know about impacts?

How is impact assessed?



# ACTIVITY



# Why Assess Research Impact?

Internationally, the growing **accountability** agenda has led to demands to assess the value of investing public funds in research and to demonstrate evidence-based policies.

Research assessment has shifted from being purely **summative** to more **formative & comprehensive**, including a patient focus and wider impacts.



# What is Research Impact?

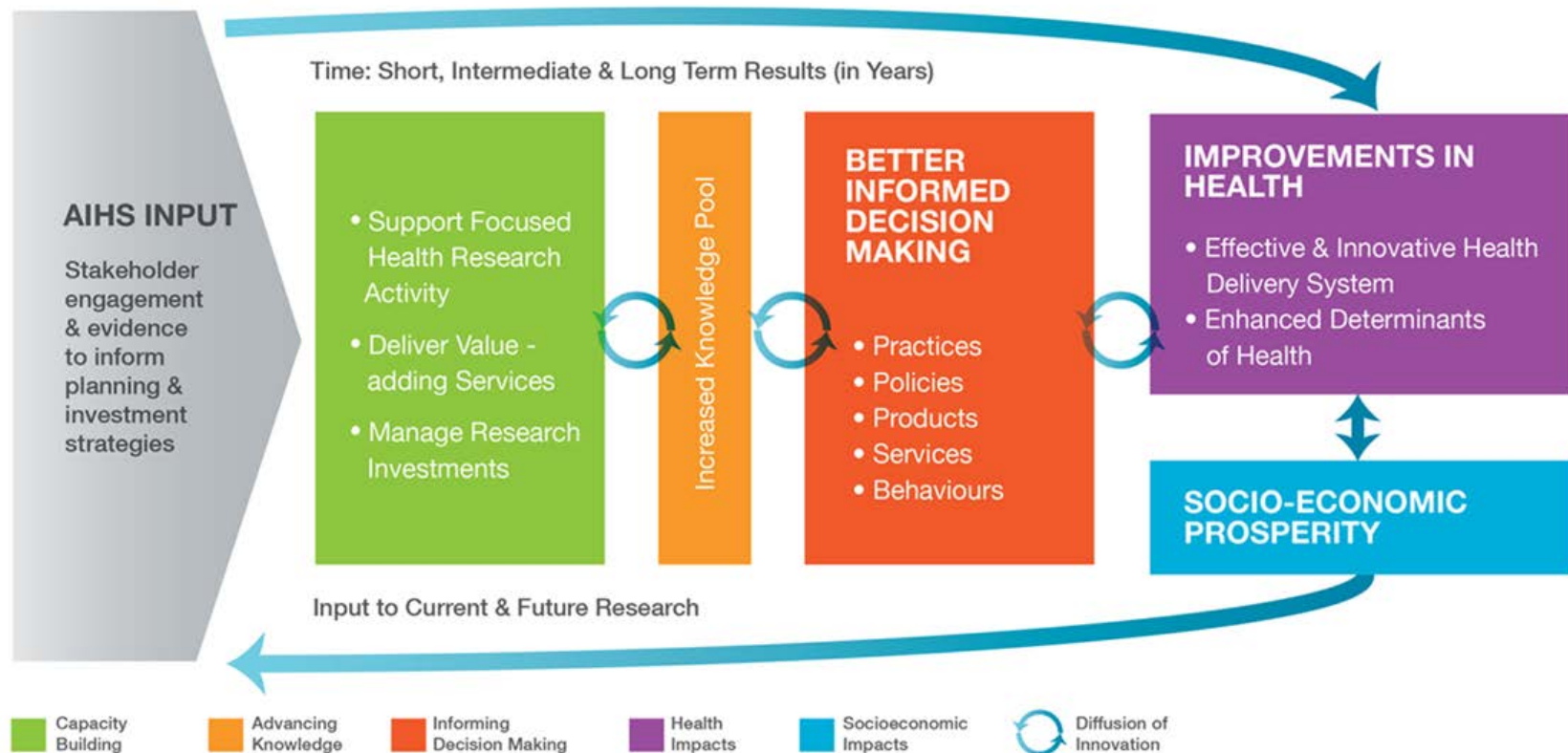
“An effect on, change or benefit to the economy, society, culture, public policy or services, health, the environment or quality of life, **beyond academia**,”

*-Research Excellence Framework, UK*

AIHS' comprehensive view of impact encompasses  
academia & healthcare

# Linking Research Evidence to Impacts

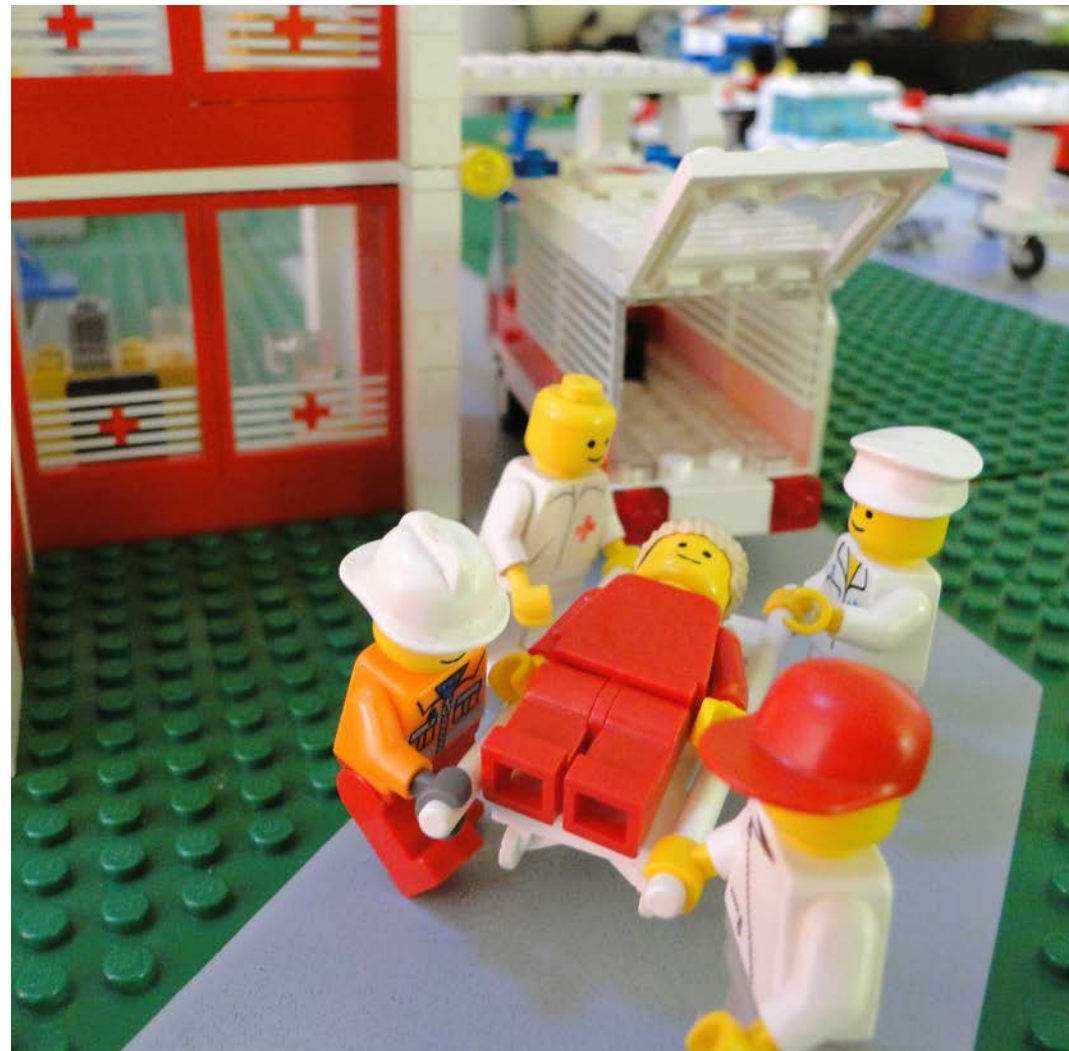
AIHS Mission & Vision



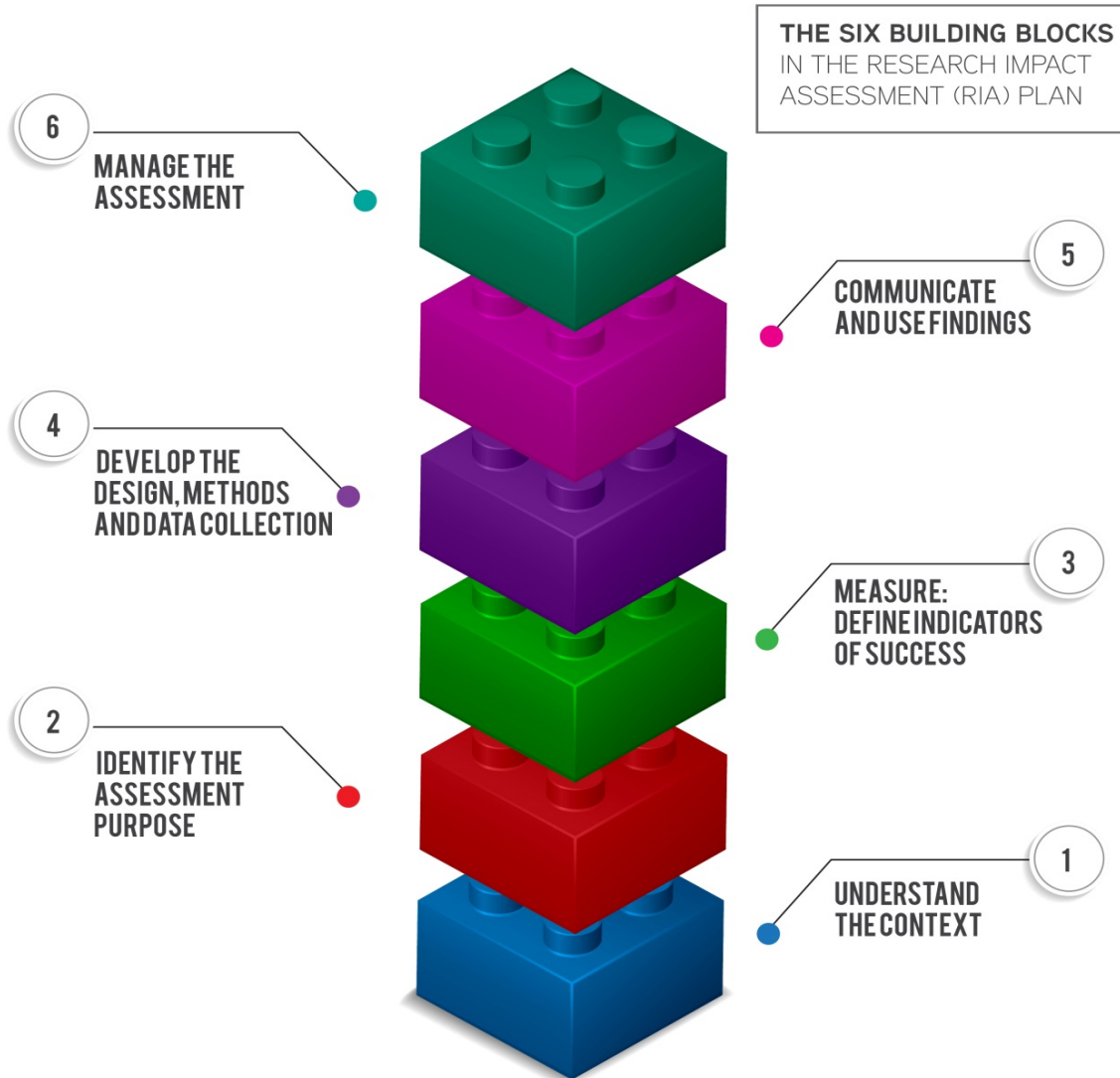
Routine Monitoring and Evaluation

# Who Needs to Know About Impacts?

- Patients
- Healthcare system
- Policy makers
- Other academics
- Others?



# How is Impact Assessed?



# Competencies for Canadian Evaluation Practice



## Reflective Practice

- Focus on underlying norms & values; self-awareness

## Technical Practice

- Focus on design, data collection, analysis, interpretation, & reporting

## Situational Practice

- Focus on attending to interests, issues, & contextual circumstances

## Management Practice

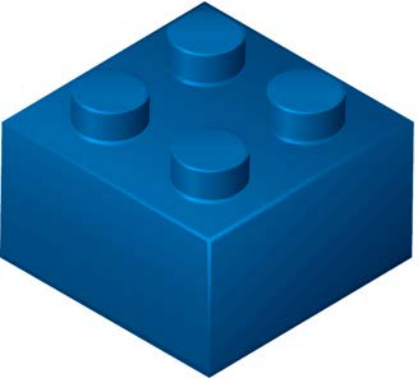
- Focus on managing a project/evaluation

## Interpersonal Practice

- Focus on people skills (e.g., communication, negotiation, diversity)

For more information:

<http://evaluationcanada.ca/competencies-canadian-evaluators>

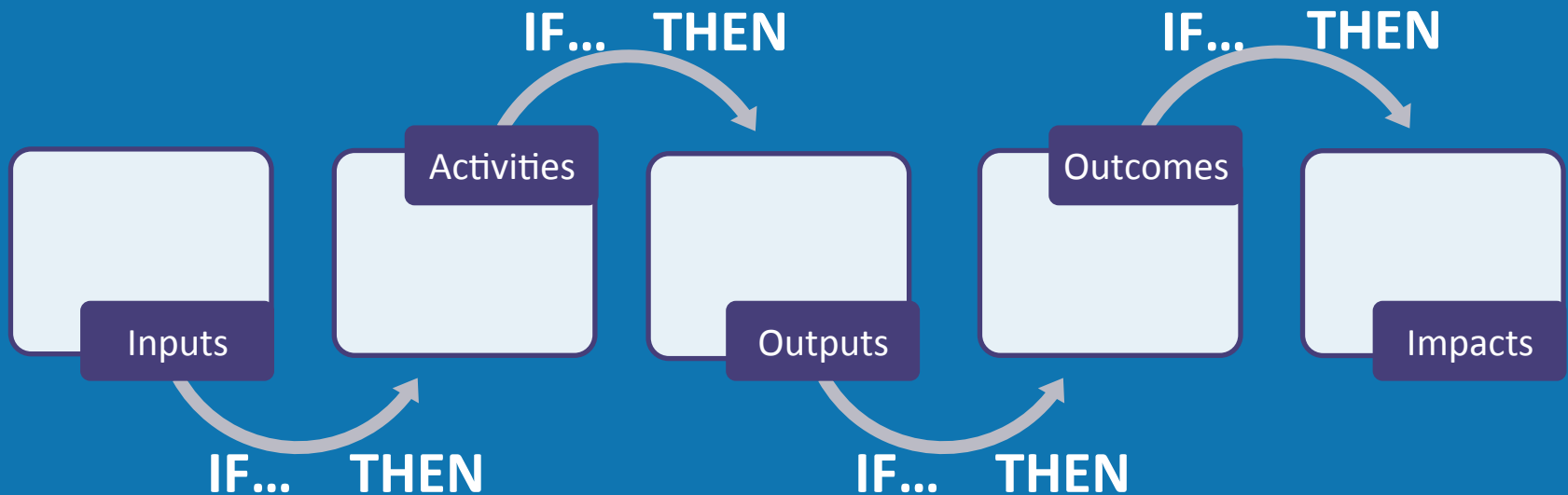


# Impact Framework

## Program Description

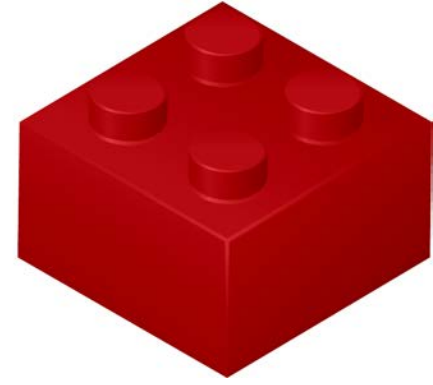
- Unit of analysis, stage, time frame(s)
- Logic Model

## The Logic of Logic Models



2

IDENTIFY THE  
ASSESSMENT  
PURPOSE



## Accountability

---

To promote responsible management of research funds

## Analysis & Learning

---

To answer “what works?” and make informed decisions

## Advocacy

---

To demonstrate research benefits to government & society

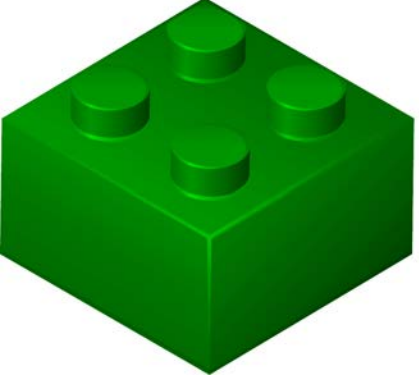
## Allocation

---

To develop effective investment strategies

**Identify the purpose of the RIA  
in relation to your stakeholders**





3

MEASURE:  
DEFINE INDICATORS  
OF SUCCESS

## Selection of Indicators of Success

- Guided by logic model, RIA purpose, & assessment questions
- Considerations include:

**F**ocused

**A**ppropriate

**B**alanced

**R**obust

**I**ntegrated

**C**ost Effective

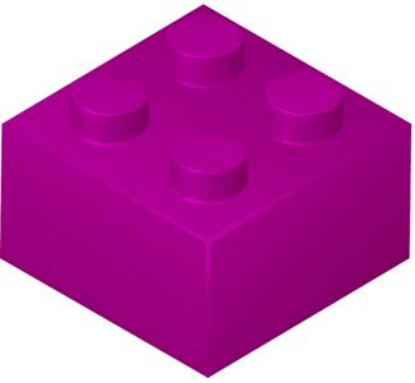


4

DEVELOP THE  
DESIGN, METHODS  
AND DATA COLLECTION



- RIA Design
  - Mixed Methods
  - Methods may include:
    - Case Study
    - Bibliometrics
    - Economic Evaluation
- Data Collection



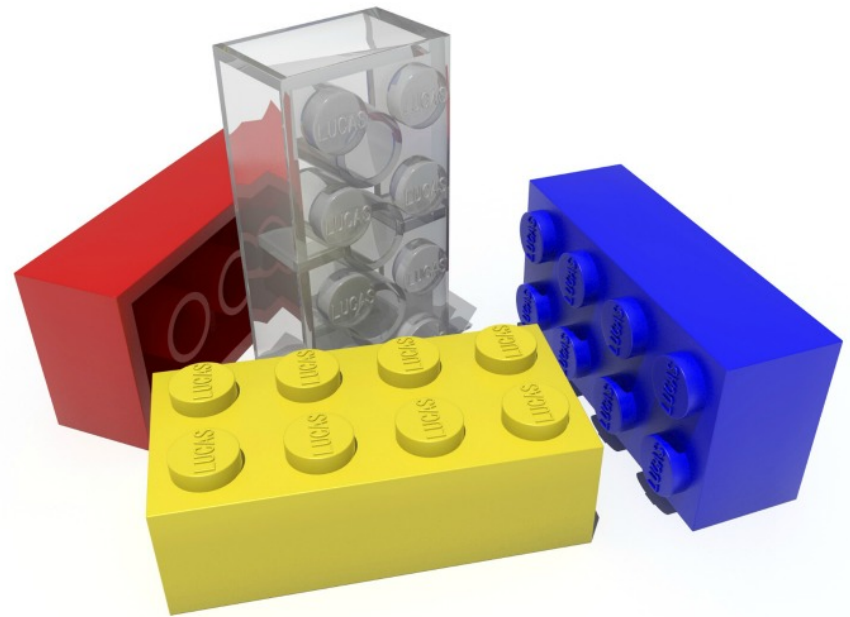
5

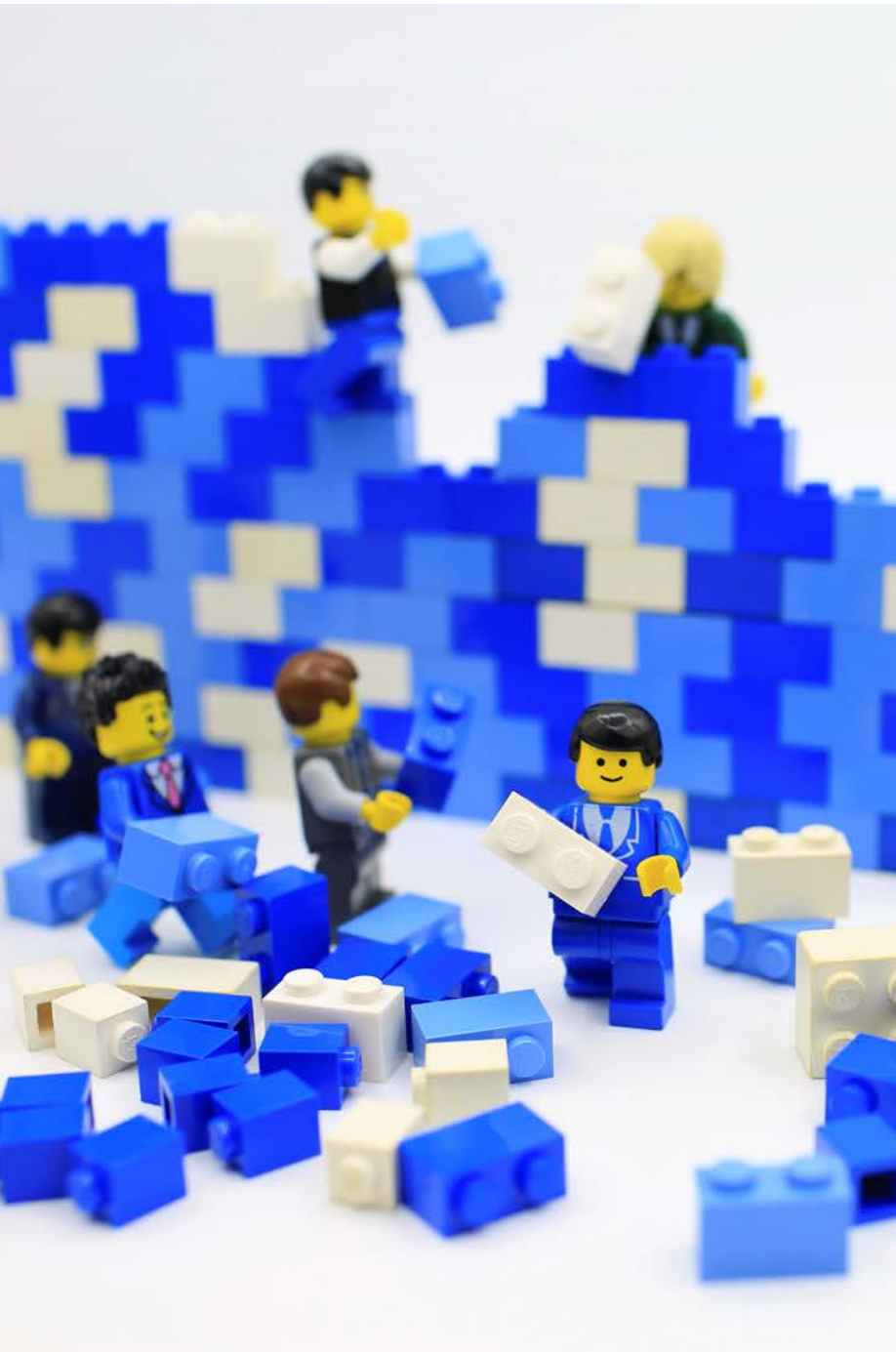
COMMUNICATE  
AND USE FINDINGS

- Impact-driven Communication
- Audiences
- Tools
  - e.g., Impact Narratives



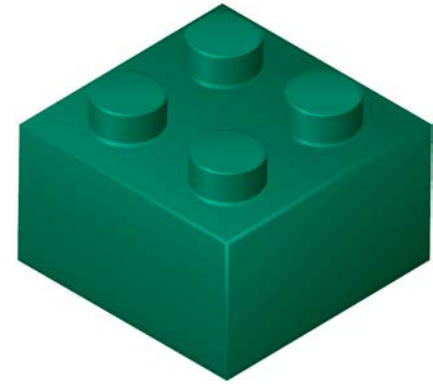
# ACTIVITY





6

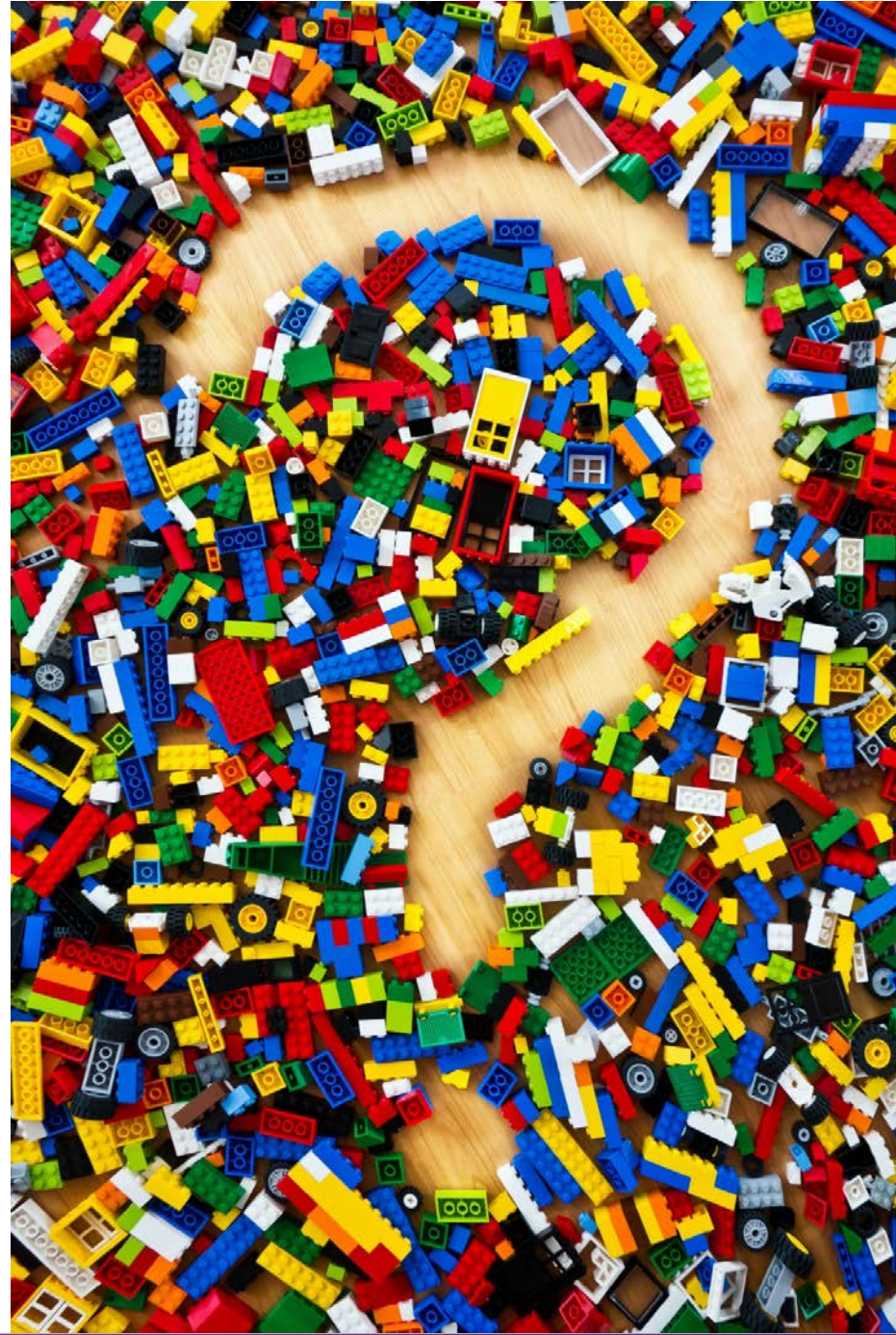
MANAGE THE  
ASSESSMENT



## Management of:

- Processes
  - e.g., budget, timelines, monitoring progress & risks
- People
  - e.g., buy-in, engagement
- Risk
- Quality Assurance

# Questions?



# Thank You!

**Deanne Langlois-Klassen, PhD, Associate Director**  
Performance Management & Evaluation  
Alberta Innovates – Health Solutions

[Deanne.Langlois-Klassen@aihealthsolutions.ca](mailto:Deanne.Langlois-Klassen@aihealthsolutions.ca)

